



THOMPSON RIVERS UNIVERSITY



2021-22 VIEWBOOK
Find your TRU



- 1. Bee Happy Garden
- 2. Ken Lepin Science & Health Sciences Building
- 3. TRU Recreation
- 4. Chappell Family Building for Nursing & Population Health
- 5. Culinary Arts Training Centre
- 6. Research & Graduate Studies, Indigenous Education
- 7. Clock Tower
- 8. Old Main
- 9. Outdoor basketball courts
- 10. The Reach
- 11. International Building
- 12. Arts & Education
- 13. Campus Activity Centre
- 14. House of Learning/Main Library
- 15. North Tower student residence

- 16. Horticulture Gardens
- 17. Industrial Training & Technology Centre
- 18. Trades and Technology
- 19. To Animal Health Technology and Facilities
- 20. Transit Bus Loop
- 21. Tournament Capital Centre & Hillside Stadium
- 22. Open Learning
- 23. Cplul'kw'ten
- 24. Sustainability
- 25. McGill Residence student residence
- 26. To East Village student residence

This is an artistic representation of some of the best spots on campus, but there are plenty more buildings, spaces and events to discover for yourself!

tru.ca/map



#myTRU



Photo: Kim Anderson



Photo: Sam Egan



Photo: Peter Olsen



Photo: Cody Roy

RIGHT HERE.

You belong here. Embrace the community vibe of gorgeous Kamloops, British Columbia, without sacrificing the amenities and attractions of a large, bustling city.

Find the right balance of art, culture, adventure—and of course, academics—at TRU, in Kamloops.



After completing my undergraduate degree at TRU, it was an easy decision to return for a law degree. I got to know members of the community while playing volleyball for the WolfPack, so I knew exactly how welcoming and supportive Kamloops is of its students."

Katie Matthews

Juris Doctor (2020)
Surrey, BC



Thompson Rivers University campuses are on the traditional lands of the Tk'emlúps te Secwépemc (Kamloops campus) and the T'exelc (Williams Lake campus) within Secwépemc'ulucw, the traditional and unceded territory of the Secwépemc people. Our region also extends into the territories of the Stat'imc, Nlaka'pamux, Nuxalk, Tsilhqot'in, Dakelh and Métis peoples.

FOR YOU.

You belong at TRU. With 140 on-campus programs, and even more online, your choices here are virtually limitless.

If you aren't sure where to start, we have plenty of student supports like counselling, program advising, and a future students team (just to name a few) to get you where you need to go.



“I couldn't be happier with my decision. I had many opportunities on campus, largely thanks to the small classes. The connections you make can propel you into whatever future you want if you put in an honest effort and work hard.”

Canyon Sinclair

Bachelor of Business Administration (2021)
Surrey, BC





NWCCU Accreditation

We are committed to your success and the delivery of quality programming. TRU is accredited at the associate, baccalaureate, and master's degree levels, and is compliant with the standards, policies and eligibility requirements of the Northwest Commission on Colleges and Universities. This distinction applies to TRU as a whole; we put student success first at both campuses, through Open Learning, in sustainability, university governance, student services and more.

tru.ca/about

Academic Excellence

More than a degree

CONNECT – Learn to lead and collaborate with others, while building strong communication skills.

ENGAGE – Create lasting change in your life and professional communities. Recognize and adopt socially responsible, environmentally sustainable and ethical work and life practices.

EXPLORE – Research, innovate and spur change using creative solutions and critical thought.

BRING LOCAL TO GLOBAL – Engage with and learn from people of diverse backgrounds. Increase intercultural awareness and learn the value of traditional and contemporary Indigenous knowledge, while recognizing policies that incite discrimination, historically and today.

These four themes are elements of all TRU baccalaureate (bachelor's) degrees, and represent our commitment to prepare graduates with critical skills.







AT TRU.

Find yourself here. Meet classmates who turn into lifelong friends, or future colleagues. Learn from professors who become irreplaceable mentors. Explore your interests with a campus club and watch it evolve into a rewarding passion. We are here so you can thrive.



“As a kid, I chased butterflies and asked why the sky was blue. Biology connects everything I was always interested in: being outside and learning about life on Earth. I never imagined I would understand the mechanisms of CRISPR-Cas9 or how to identify a tree species by its springtime buds. TRU is my first stepping stone for my future success as a scientist.”

Mae Frank
Bachelor of Science (2019)
Kamloops, BC



Career & Experiential Learning

DO MORE

Find out what you want to do—and maybe what you don't—before you graduate. Leave university with a head start. Test drive career options while earning course credit. Add paid work alongside your studies with on-campus, part-time opportunities. Share your knowledge and skills through community-based projects. Or dive into an undergraduate research project. We make sure you have access to real-world career experience before graduating.

Co-op

Co-op Abroad

Work study

Apprenticeship

Study Abroad

Internships

Undergraduate research

Service learning

Field School

Professional practicums

Volunteer opportunities

+ Many more

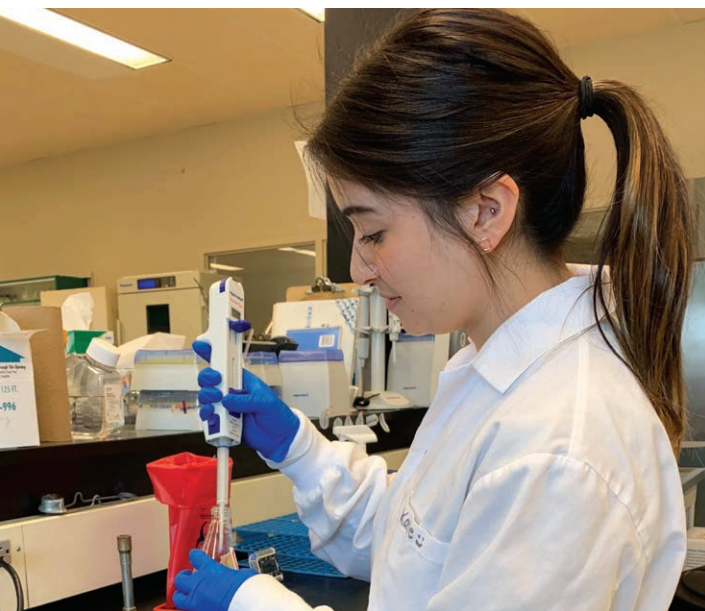
We can connect you with these work and experiential gigs:

Curricular – for credit

Co-curricular – complement formal curricular learning (not for credit)

Extra-curricular – learn outside of the classroom or in the community (not for credit)

tru.ca/cel





Alumni Leading the Way

YOUR FUTURE IS BRIGHT



“TRU set me up for success in the real world. From networking with business executives to staying up late studying with colleagues, time here taught me both the hard and soft skills I needed to be successful. I cannot think of a better university to begin one’s career.”

Evan Choy

Bachelor of Business Administration (2018)
Branch Manager Associate, TD Bank
Prince George, BC



“As a student, I had the opportunity to get my feet wet in an industry that is highly competitive and constantly changing. The flexibility of turning work experience into graduation credits enabled me to thrive in internships without having to sacrifice the summer employment income that I needed.”

Ashley Wadhvani

Bachelor of Journalism (2015)
BC Digital Editor, Black Press Media
Vancouver, BC



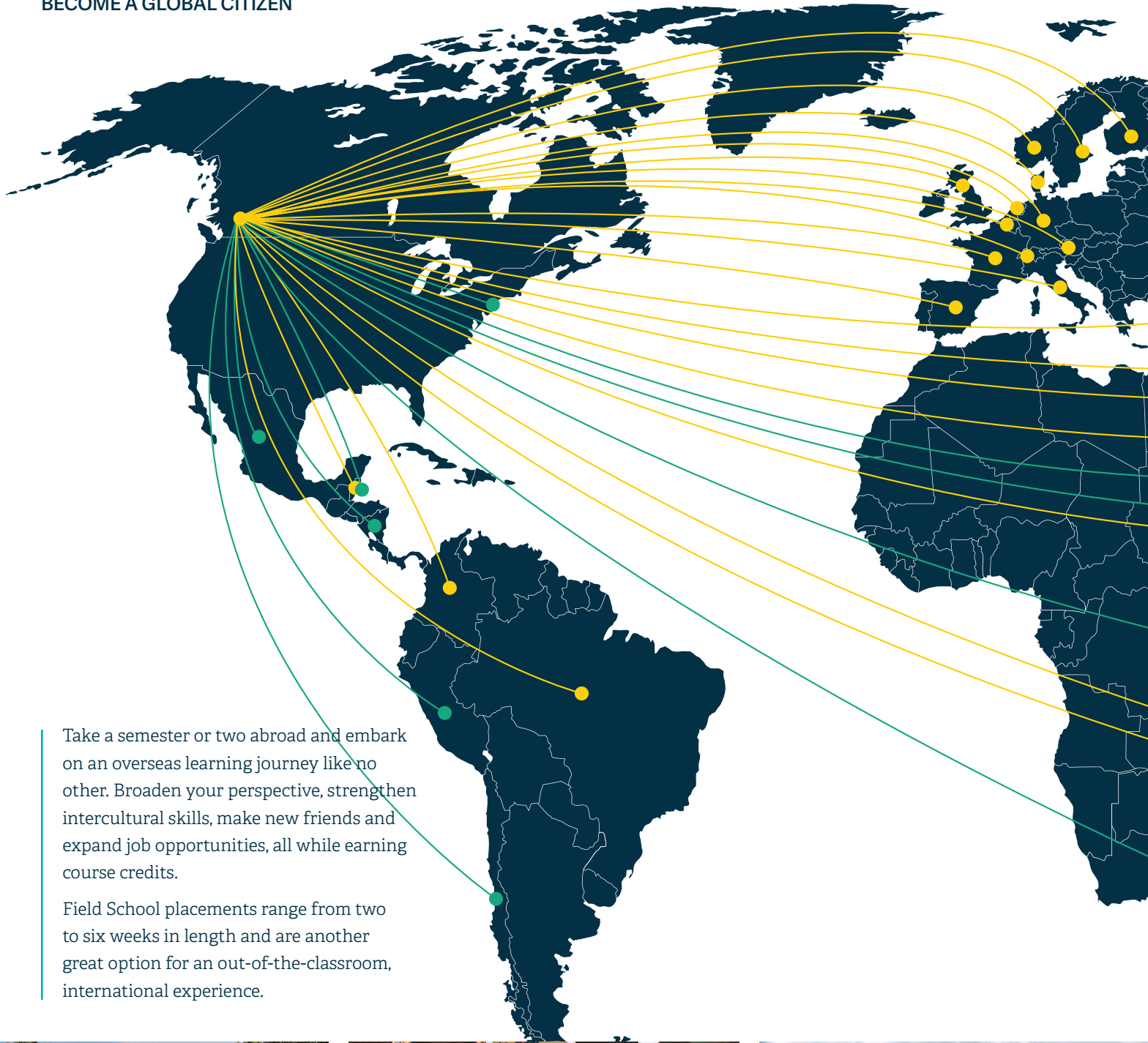
“I came to BC to live the dream of becoming a professional skier, and TRU changed what I view as success in the tourism industry. I am no longer tied to an identity as an athlete. I can reach success from many avenues.”

Chelsea Sullivan

Adventure Guide Diploma (2012)
Bachelor of Interdisciplinary Studies (2018)
Apprentice Ski Guide
Association of Canadian Mountain Guides Whistler, BC

Study Abroad

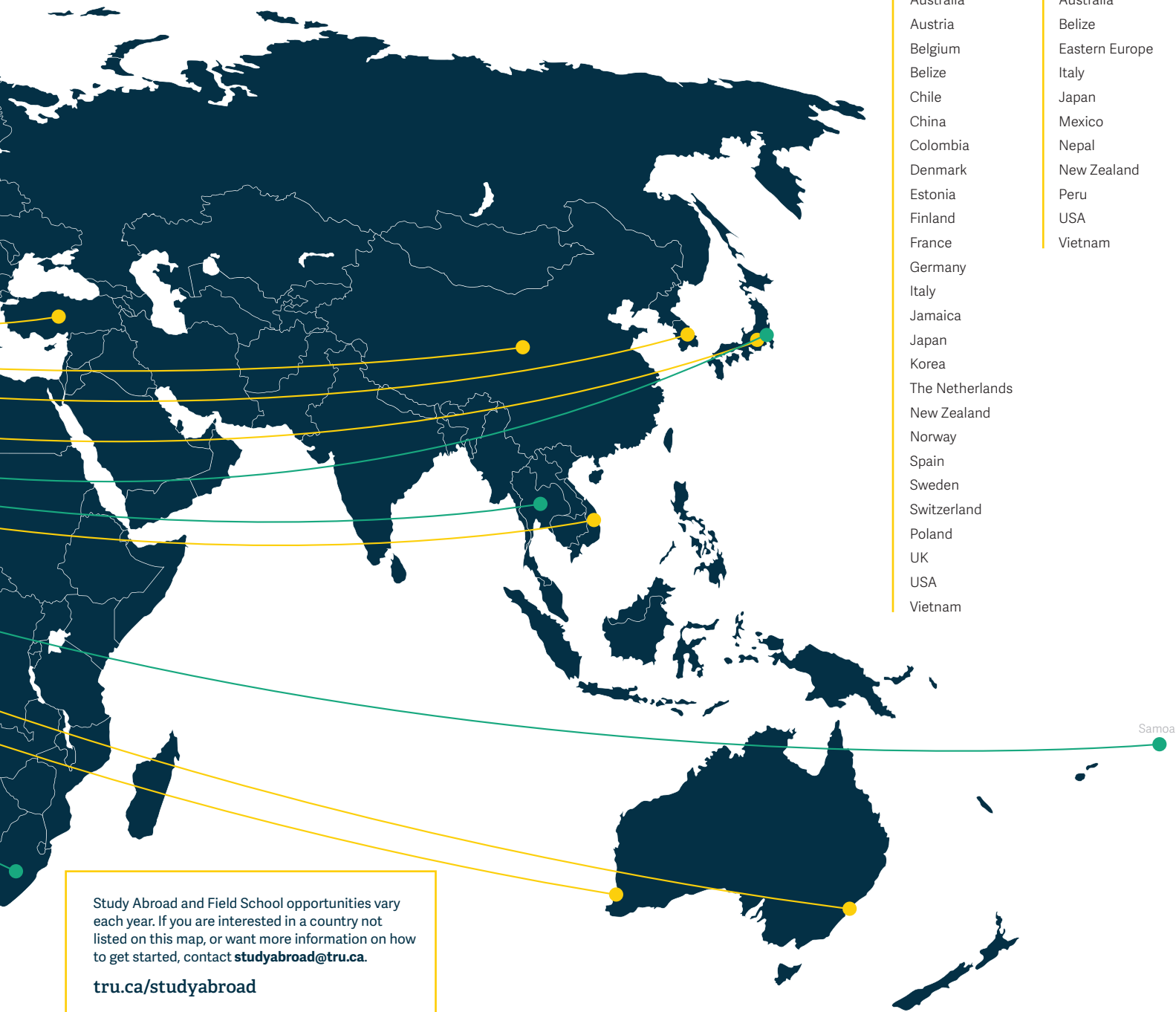
BECOME A GLOBAL CITIZEN



Take a semester or two abroad and embark on an overseas learning journey like no other. Broaden your perspective, strengthen intercultural skills, make new friends and expand job opportunities, all while earning course credits.

Field School placements range from two to six weeks in length and are another great option for an out-of-the-classroom, international experience.





Study Abroad

- Australia
- Austria
- Belgium
- Belize
- Chile
- China
- Colombia
- Denmark
- Estonia
- Finland
- France
- Germany
- Italy
- Jamaica
- Japan
- Korea
- The Netherlands
- New Zealand
- Norway
- Spain
- Sweden
- Switzerland
- Poland
- UK
- USA
- Vietnam

Field Schools

- Australia
- Belize
- Eastern Europe
- Italy
- Japan
- Mexico
- Nepal
- New Zealand
- Peru
- USA
- Vietnam

Study Abroad and Field School opportunities vary each year. If you are interested in a country not listed on this map, or want more information on how to get started, contact studyabroad@tru.ca.
tru.ca/studyabroad





TEAMS AND HEAD COACHES

Men's Basketball - Scott Clark

Women's Basketball - Goran Nogic

Men's Volleyball - Pat Hennelly

Women's Volleyball - Chad Grimm

Men's Soccer - John Antulov

Women's Soccer - Mark Pennington

Men's Baseball - Ray Chadwick

Swimming - Brad Dalke

Cheerleading - Meaghan Blakely
and Heather Crawford

HIGHLIGHTS

Canada West Conference Medals (5)

U SPORTS Major Individual Awards (3)

WolfPack Olympians (2)

Canada West All-Stars 2019-20 (5)

Canada West Community Athletes of the
year 2019-20 (2)

Canada West Rookie All-Stars 2019-20 (1)



TRU provides a great support system for student-athletes. There's a good balance between wanting team success, while still seeing athletes as students first. I've had great professors and the opportunity to do biology research—an experience that would be almost impossible at a larger university! Several of my teammates and peers have gone on to law and medical school largely because of the experience they got at TRU."

Avery Pottle

Bachelor of Science (2021)
Uxbridge, ON

JOINING THE PACK

If you are interested in trying out for a team, fill out the recruitment form on gowolfpack.ca

INTRAMURALS

Are you into a more leisurely sports experience? The intramural league is the place for you. Sign up for soccer, basketball, volleyball, floor hockey, rock climbing, drop-in badminton and more.

tru.ca/recreation



WEYT-K, LE7 RE7 STSKITS'Ć

HELLO, IT IS GOOD YOU CAME.



“During my first tour of campus, we stopped at Cplul'kw'ten and they had cupcakes. I'm not sure if they were there for us or if we just stopped in on the right day, but we ended up staying awhile and I just really felt welcomed. Cplul'kw'ten helped me find balance in my first few years at TRU.”

Lesley Campbell

Bachelor of Education (2021)
Nlaka'pamux from Boston Bar, BC

QELMÚCW STUDENT RECRUITER-ADVISORS

Here to answer your admissions questions, and assist with your application and next steps.

futureindigenous@tru.ca
Toll Free: 1-888-663-1653

Indigenous Students at TRU

You aren't on your journey alone. Here you'll find small class sizes, personal attention and practical learning experiences. About 11% of our students are Indigenous—you will meet First Nations, Métis and Inuit students from all over BC and across Canada.

Walking alongside you is our Indigenous Student Development team, supporting your transition to university life with mentoring, life skills, coaching, counselling and more. Self-identifying as an Indigenous student ensures that we can connect you with resources.

For more on indigenization and services for Indigenous students at TRU, visit: tru.ca/viewbook | tru.ca/indigenous

FIND COMMUNITY AT CPLUL'KW'TEN

Cplul'kw'ten is a home away from home for Indigenous students. Speak with an Elder or mentor. Take a study skills workshop, access community resources, get assistance with papers or funding, or use the computers. Study, socialize or share a meal. It's casual, it's friendly—and it's yours.

tru.ca/gatheringplace

INDIGENOUS MENTOR PROGRAM

Upper-year students in a variety of TRU programs volunteer as Indigenous Mentors to assist new students in the transition to university life. If you're a new first- or second-year student, being paired with a mentor can ease your way—whether that's an extra set of eyes on your paper or a walk in the hills.

ELDERS IN THE HOUSE

Elders possess a wealth of knowledge and life experiences with specific expertise in Indigenous ways of knowing and being that they are willing to share with younger generations. Through our Elder in the House Program, TRU Elders provide personal consultation, conversation, guidance and mentorship. Drop in any day at Cplul'kw'ten.



Photo: Dr. Rod McCormick, an internationally recognized scholar on Indigenous wellness, leads the *All My Relations Research Centre* at TRU. The centre works in partnership with communities to advance Indigenous health and healing. McCormick is also a mentor with TRU's Knowledge Makers program, which creates pathways for Indigenous undergraduate students to engage in research. McCormick is shown here collaborating with Indigenous students on a research project.



Open Learning

If you're interested in learning online, you're in good hands: TRU Open Learning has been helping students reach their goals for more than four decades. In addition to campus programs and courses, Open Learning offers certificate, diploma and degree programs, and hundreds of courses, all online or by distance. With a seamless transfer process, Open Learning can be the perfect complement to on-campus studies.

“I felt there was a ceiling of how far I could go in my career in healthcare simulation without a degree. Open Learning was extremely flexible and there was no barrier that was impossible.”

Agnes Ryzynski

Bachelor of Health Science
Open Learning (2018)
Toronto, ON

FIND FLEXIBILITY

Open Learning courses can make it easier to manage your schedule. If you want to complete a co-op term out of town, travel abroad, or just have a more flexible course schedule, you can take your studies with you wherever you go.

You can take as many Open Learning courses at a time as you like: take one to get ahead in your studies, or complete a full semester of courses online. Just check with Advising to ensure the course fits your program's requirements and you can register right away: registration for most Open Learning courses is open 365 days a year.

Not planning to attend campus in your first year? You can upgrade, complete prerequisites and earn credits toward your credential before you make your debut on campus.

For more information, visit

tru.ca/distance





Williams Lake

Our second campus is located in Williams Lake, about three hours northwest of Kamloops.

In this growing city located in the beautiful Cariboo Chilcotin region, the cost of living is low, and people know their neighbours. Central to the culture and traditions of the Cariboo are 15 distinct First Nations communities, as well as an economy based on forestry, agriculture and mining.

Small class sizes mean you get to know your instructors in programs like Applied Sustainable Ranching, Practical Nursing, select trades and more.

For more information on TRU Williams Lake, visit

tru.ca/wl



Start at TRU, go anywhere. This is just a snapshot of our faculties, schools and their departments. Dive deeper into your interests with program majors and minors. Visit tru.ca/programs for more information.

Choose

Craving adventure or culinary masterpieces?

ADVENTURE, CULINARY ARTS & TOURISM

Adventure Studies
Culinary Arts
Tourism Management



Intrigued by the world around you?

Looking to build creative thinking and communication skills, or create art?



ARTS

English & Modern Languages
Geography & Environmental Studies
Interdisciplinary Studies
Journalism, Communication & New Media
Philosophy, History & Politics
Police & Justice Studies
Psychology
Sociology & Anthropology
Visual Arts & Performing Arts

BUSINESS & ECONOMICS

Accounting & Finance
Economics
Human Enterprise & Innovation
Management, Information & Supply Chain
Marketing & International Business



Have big entrepreneurial dreams?

EDUCATION & SOCIAL WORK

English as a Second Language
Education
Social Work & Human Service
University and Employment Preparation



Interested in teaching or helping others?

your path

Inspired to make the world a better place?



LAW

Juris Doctor

NURSING

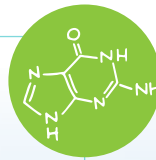
Nursing
Health Care Assistant
& Practical Nursing (WL)



Passionate about care?

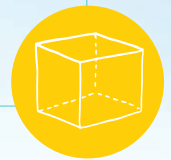
SCIENCE

Animal Health Technology
Applied Sustainable Ranching (WL)
Architectural & Engineering Technology
Biological Sciences
Chemistry
Computing Science
Engineering & Applied Science
Mathematics & Statistics
Natural Resource Sciences
Physics & Geology
Respiratory Therapy



TRADES & TECHNOLOGY

Automotive
Carpentry
Electrical
Electrical Instrumentation
Horticulture
Heavy Duty & Commercial
Transport
Heavy Mechanical
Millwright
Plumbing
Refrigeration & Air Conditioning
Water Treatment
Welding



Curious about how things work, or enjoy working with your hands?

OPEN LEARNING tru.ca/distance

Adult Basic Education
Arts
Business and Management Studies
Education & Social Work
General Studies
Health Sciences
Science
Technology
Tourism



Prefer studying online?



How do I get in?

PROGRAM ADMISSIONS ARE BASED ON THREE PROCESSES

Non-competitive Admission

The number of students admitted into these programs is **not limited**. Programs have minimum admission requirements, but if you are missing a requirement, upgrading is possible. See Open Access University below.



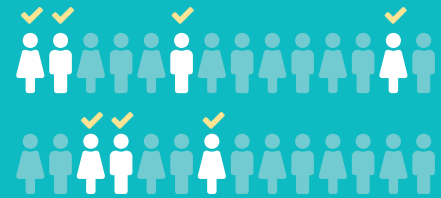
Limited Admission

Only a **limited number** of students will be accepted into these programs each year. Admission decisions are made on a first-qualified basis.



Competitive Admission

A **select number** of students are accepted into these programs each year. Your grades will be considered and you may be asked to submit letters of reference, attend an interview, and/or fill out a questionnaire. These programs have a set application deadline.



University & Employment Preparation

UNIVERSITY PREPARATION

Upgrade your skills. Complete the courses you need to enter career, vocational and academic programs, or choose from adult basic education diplomas including the BC Adult Graduation Diploma (the equivalent to high school completion).

tru.ca/uprep

EDUCATION AND SKILLS TRAINING

Gain workplace skills and independence with the ESTR program for students with cognitive disabilities. Learn on campus, gain knowledge about future employment opportunities, and train in a specific area. tru.ca/estr

ENGLISH AS A SECOND LANGUAGE Academic Preparation Program

Develop your ability to understand, speak, read and write English and prepare for academic study in this nationally recognized five-level program. At level four you can take one academic course. At level five, you can take up to three academic courses. tru.ca/esl

Open Access University

We believe everyone has the right to seek their potential. So, at TRU, access is open: we welcome students from our region and around the world to learn from and with one another.

If you don't meet your program requirements, you can upgrade at TRU. For some programs, you can take an upgrading course alongside other first-year courses, so you don't have to wait to begin your studies. If you aren't sure where to start, let us know.

No matter your goals, wherever you are in life, we are here for you.



What do I need to get in?

SECONDARY SCHOOL COURSE EQUIVALENTS

Don't see your completed course listed in the program requirements chart? High schools across Canada have different courses that are equal in value (equivalent) that meet our program requirements.

Be sure to check your courses at tru.ca/equivalents

ADVANCED STANDING & ENRICHED PROGRAMS

Students who complete enriched secondary school programs can earn transfer credits.

International Baccalaureate: for higher-level courses passed with a grade of 5 or higher

Advanced Placement: for approved subjects passed with a grade of 4 or higher

tru.ca/asep



PROGRAMS & ADMISSION REQUIREMENTS

Adventure, Culinary Arts & Tourism

ADVENTURE GUIDE CERTIFICATE

ENGLISH 73% in English Studies 12 or English First Peoples 12

MATH Any Math 11

ADDITIONAL REQUIREMENTS Completion of the Adventure Studies Student Information Form; Supplemental documents and attendance of information sessions; 19 years of age by start of program

ADMISSION TYPE Competitive

ADVENTURE GUIDE DIPLOMA

ADDITIONAL REQUIREMENTS Completion of the Adventure Guide Certificate; Detailed resumé; Adventure Studies Student Information Form Experience Log; Attendance of information session; 19 years of age by start of program

ADMISSION TYPE Competitive

BACHELOR OF TOURISM MANAGEMENT

[ ]

ENGLISH 73% in English Studies 12 or English First Peoples 12

MATH 60% in Foundations of Math 11 or Pre-Calculus 11 or Foundations of Math 12

ADDITIONAL REQUIREMENTS Students with 67% in Pre-Calculus 12 or Foundations of Math 12 will be exempt from MATH 1100

ADMISSION TYPE Limited

Streams: Adventure Studies, Tourism Management

Concentrations: Adventure Studies, Innovation & Entrepreneurship, Festivals & Events, Resort Experience

Major: Adventure Studies

Exit credential after two years: Tourism Management Diploma

EVENTS & CONVENTIONS MANAGEMENT DIPLOMA

ENGLISH 73% in English Studies 12 or English First Peoples 12

MATH 60% in Foundations of Math 11 or Pre-Calculus 11 or Foundations of Math 12

ADDITIONAL REQUIREMENTS Detailed resumé. Note: Students with 67% in Pre-Calculus 12 or Foundations of Math 12 will be exempt from MATH 1100

ADMISSION TYPE Limited

PROFESSIONAL COOK LEVEL 1 & 2 CULINARY ARTS CERTIFICATE

ADDITIONAL REQUIREMENTS Grade 10 (grade 12 preferred) or Mature Student Status; Entry assessment for Math and English; Interview with program coordinator

ADMISSION TYPE Limited

RESORT & HOTEL MANAGEMENT DIPLOMA

ENGLISH 73% in English Studies 12 or English First Peoples 12

MATH 60% in Foundations of Math 11 or Pre-Calculus 11 or Foundations of Math 12

ADDITIONAL REQUIREMENTS Detailed resumé. Note: Students with 67% in Pre-Calculus 12 or Foundations of Math 12 will be exempt from MATH 1100

ADMISSION TYPE Limited

RETAIL MEAT PROCESSING FOUNDATION CERTIFICATE

ADDITIONAL REQUIREMENTS Grade 10 (grade 12 preferred); Food Safe Level 1;

Successful Entry Assessment; Canadian citizenship or permanent resident status; Interview and Orientation with program coordinator

ADMISSION TYPE Limited

SPORT EVENT MANAGEMENT DIPLOMA

ENGLISH 73% in English Studies 12 or English First Peoples 12

MATH 60% in Foundations of Math 11 or Pre-Calculus 11 or Foundations of Math 12

ADDITIONAL REQUIREMENTS Detailed resumé. Note: Students with 67% in Pre-Calculus 12 or Foundations of Math 12 will be exempt from MATH 1100

ADMISSION TYPE Limited

Arts, Humanities & Social Sciences

ABORIGINAL STUDIES CERTIFICATE	ADDITIONAL REQUIREMENTS Completed in conjunction with the Bachelor of Arts. Apply to the Bachelor of Arts ADMISSION TYPE Non-competitive; Upgrading available in program	
BACHELOR OF ARTS [✕ C]	ENGLISH 73% in English Studies 12 or English First Peoples 12 ADDITIONAL REQUIREMENTS Math 11 or higher strongly recommended for students pursuing Education or a major in Geography & Environmental Studies, Sociology or Psychology; Recommended to take any second languages to grade 12 ADMISSION TYPE Non-competitive; Upgrading available in program	Majors: Communication, Economics, Economic & Political Studies, English, Geography & Environmental Studies, History, Mathematics, Mathematics and Economics, Philosophy, Psychology, Sociology, Theatre Arts Minors: Archaeology and Geology, Creative Writing, Environmental Economics & Sustainable Development, Geography, Language & Global Studies, Political Studies, Visual Arts Exit credential after two years: Associate of Arts or Associate of Arts Modern Language Degree
BACHELOR OF FINE ARTS (VISUAL ARTS) [✕]	ENGLISH 73% in English Studies 12 or English First Peoples 12 ADDITIONAL REQUIREMENTS Math 11 or higher strongly recommended for students pursuing Education; Recommended to take any second language to grade 12 ADMISSION TYPE Non-competitive; Upgrading available in program	
BACHELOR OF INTERDISCIPLINARY STUDIES [✕ C]	ADDITIONAL REQUIREMENTS Completion of 60 credits; Third year entry; See tru.ca/calendar for admission requirements ADMISSION TYPE Competitive	
BACHELOR OF JOURNALISM [✕]	ENGLISH 73% in English Studies 12 or English First Peoples 12 ADDITIONAL REQUIREMENTS Writing Sample ADMISSION TYPE Competitive	Majors: Public Relations
CULTURAL AND SOCIAL EXPLORATIONS CERTIFICATE	ENGLISH 73% in English Studies 12 or English First Peoples 12 ADMISSION TYPE Non-competitive; Upgrading available in program	
LITERARY AND ART HISTORY CERTIFICATE	ENGLISH 73% in English Studies 12 or English First Peoples 12 ADMISSION TYPE Non-competitive; Upgrading available in program	
MODERN LANGUAGES CERTIFICATE	ENGLISH 73% in English Studies 12 or English First Peoples 12 ADMISSION TYPE Non-competitive; Upgrading available in program	
PAINTING AND DRAWING CERTIFICATE	ENGLISH 73% in English Studies 12 or English First Peoples 12 ADMISSION TYPE Non-competitive; Upgrading available in program	
VISUAL ARTS STUDIO CERTIFICATE	ENGLISH 73% in English Studies 12 or English First Peoples 12 ADMISSION TYPE Non-competitive; Upgrading available in program	
VISUAL ARTS DIPLOMA	ENGLISH 73% in English Studies 12 or English First Peoples 12 ADMISSION TYPE Non-competitive; Upgrading available in program	

Arts, Humanities & Social Sciences continued...

WORLD LANGUAGES AND CULTURES CERTIFICATE

ENGLISH 73% in English Studies 12 or English First Peoples 12
ADMISSION TYPE Non-competitive; Upgrading available in program

Business, Economics & Management

BACHELOR OF BUSINESS ADMINISTRATION

[ ]

ENGLISH 73% in English Studies 12 or English First Peoples 12
MATH 67% in Foundations of Math 12 or Pre-Calculus 12
ADMISSION TYPE Non-competitive; Upgrading available in program

Majors: Accounting, Economics, Entrepreneurship, Finance, General Business, Human Resource Management, International Business, Marketing, Supply Chain Management

Minors: Environmental Economics & Sustainable Development, Financial Markets & Institutions, Financial Services, Leadership

Exit credential after two years: Associate of Commerce and Business Administration Diploma

ACCOUNTING TECHNICIAN DIPLOMA

ENGLISH 73% in English Studies 12 or English First Peoples 12
MATH 67% in Foundations of Math 12 or Pre-Calculus 12
ADMISSION TYPE Non-competitive; Upgrading available in program
Exit credential after first year: Business Foundations Certificate

ADMINISTRATIVE ASSISTANT CERTIFICATE

ENGLISH 67% in English Studies 12 or English First Peoples 12
ADDITIONAL REQUIREMENTS Completion of grade 11 (grade 12 preferred) or Mature Student Status; Min. keyboarding speed of 25 net words per minute. *Students wishing to complete the Administrative Assistant Certificate must apply to the Business Fundamentals Certificate
ADMISSION TYPE Limited
Exit credential after first semester: Business Fundamentals Certificate

EXECUTIVE ASSISTANT DIPLOMA

ENGLISH 73% in English Studies 12 or English First Peoples 12
MATH 67% in Foundations of Mathematics 12 or Pre-Calculus 12
ADDITIONAL REQUIREMENTS Completion of the Administrative Assistance Certificate
ADMISSION TYPE Limited

FIRST NATION APPLIED ECONOMICS CERTIFICATE

ENGLISH 73% in English Studies 12 or English First Peoples 12
MATH 67% in Foundations of Mathematics 11 or Pre-Calculus 11
ADDITIONAL REQUIREMENTS Basic computer literacy and familiarity with word processing and spreadsheet software
ADMISSION TYPE Non-competitive; Upgrading available in program

FIRST NATION TAXATION ADMINISTRATION CERTIFICATE

ENGLISH 73% in English Studies 12 or English First Peoples 12
MATH 67% in Foundations of Mathematics 11 or Pre-Calculus 11
ADDITIONAL REQUIREMENTS: Basic computer literacy and familiarity with word processing and spreadsheet software
ADMISSION TYPE Non-competitive; Upgrading available in program

MANAGEMENT DIPLOMA

ENGLISH 73% in English Studies 12 or English First Peoples 12
MATH 67% in Foundations of Math 12 or Pre-Calculus 12
ADMISSION TYPE Non-competitive; Upgrading available in program
Exit credential after first year: Business Foundations Certificate

Education

BACHELOR OF EDUCATION *Elementary*

ADDITIONAL REQUIREMENTS Minimum of 90 credits of post-secondary studies acceptable to the School of Education, typically arts, fine arts, math, science, music or physical education; Minimum GPA 2.67; 100 volunteer hours; Letter of Intent; Two confidential statements from referees. See tru.ca/calendar for more information

ADMISSION TYPE Competitive

BACHELOR OF EDUCATION *Secondary STEM*

ADDITIONAL REQUIREMENTS Four-year Bachelor of Science degree (120 credits) or equivalent in mathematics or science discipline; Minimum GPA of 2.33 on the most recent 60 credits; 100 volunteer hours; Letter of Intent; Spontaneous written and personal interview; Two confidential statements from referees. See tru.ca/calendar for more information

ADMISSION TYPE Competitive

EARLY CHILDHOOD EDUCATION DIPLOMA

ENGLISH 73% in English Studies 12 or English First Peoples 12

ADDITIONAL REQUIREMENTS 25 hours of volunteer and/or work experience in a licensed child care facility; Attend an applicant readiness interview

ADMISSION TYPE Limited

Health Sciences

BACHELOR OF SCIENCE IN NURSING

[✕]

ENGLISH 73% in English Studies 12 or English First Peoples 12

MATH 67% in Foundations of Math 12 (recommended) or Pre-Calculus 12

SCIENCE 67% in Anatomy & Physiology 12; 67% in Chemistry 11

ADDITIONAL REQUIREMENTS 67% in one additional science 11 or 12; Letter of Introduction

ADMISSION TYPE Competitive

BACHELOR OF HEALTH SCIENCE

ADDITIONAL REQUIREMENTS Same requirements as Respiratory Therapy Diploma

ADMISSION TYPE Competitive

(Respiratory Therapy Dual Credential)

HEALTH CARE ASSISTANT CERTIFICATE

ENGLISH 73% in English Studies 11 or equivalent

ADDITIONAL REQUIREMENTS Completion of grade 11 minimum; Standard First Aid with CPR Level C; Food Safe Level 1

ADMISSION TYPE Limited

PRACTICAL NURSING DIPLOMA

(Williams Lake Campus)

ENGLISH 65% in English Studies 12 or English First Peoples 12

MATH 60% in Foundations of Math 11 or equivalent

SCIENCE 60% in Anatomy and Physiology 12; 65% in Human Anatomy and Physiology for Practical Nurses (PNUR 1300 or HLTH 1121 at TRU). See tru.ca/calendar for additional details

ADMISSION TYPE Competitive

RESPIRATORY THERAPY DIPLOMA

ENGLISH 73% in English Studies 12 or English First Peoples 12

MATH 67% in Foundations of Math 12 or Pre-Calculus 12

SCIENCE 67% in Anatomy & Physiology 12; 67% in Physics 11; 67% in Chemistry 12

ADDITIONAL REQUIREMENTS CPR Level C with AED; Program Information Session and/or Hospital RT Department Tour; Canadian citizenship or permanent resident status

ADMISSION TYPE Competitive

Law & Justice

LAW—JURIS DOCTOR

[✕]

ADDITIONAL REQUIREMENTS Obtained an undergraduate degree or successfully completed the first three years (min. 90 credits) or more of an undergraduate degree; Completed application (including CV or resumé and any other requested information) Official transcripts; LSAT score; Personal Statement; Letters of reference; Any other supplemental documents required by your selected category of admissions. See tru.ca/calendar for admission requirements

ADMISSION TYPE Competitive

POLICE & JUSTICE STUDIES DIPLOMA

ENGLISH 73% in English Studies 12 or English First Peoples 12

ADDITIONAL REQUIREMENTS Statement of Career Objectives; Resumé

ADMISSION TYPE Limited

Science & Technology

BACHELOR OF COMPUTING SCIENCE

[✕ C]

ENGLISH 73% in English Studies 12 or English First Peoples 12

MATH 67% in Pre-Calculus 12 or Foundations of Math 12 (completed within the last two years)

ADMISSION TYPE Non-competitive; Upgrading available in program

COMPUTING SCIENCE DIPLOMA

[C]

ENGLISH 73% in English Studies 12 or English First Peoples 12

MATH 67% in Pre-Calculus 12 or Foundations of Math 12 (completed within the last two years)

ADMISSION TYPE Non-competitive; Upgrading available in program

BACHELOR OF ENGINEERING IN SOFTWARE ENGINEERING

[C]

ENGLISH 73% in English Studies 12 or English First Peoples 12

MATH 67% in Pre-Calculus 12

SCIENCE 67% in Chemistry 11; 67% in Physics 11

ADDITIONAL REQUIREMENTS Physics 12 with 67% preferred. Recommended courses: Calculus 12, Drafting 12, a computing or information technology course involving computer programming and problem solving using high-level languages such as C/C++, Visual Basic, or Java

ADMISSION TYPE Competitive

ARCHITECTURAL & ENGINEERING TECHNOLOGY DIPLOMA

ENGLISH 73% in English Studies 12 or English First Peoples 12

MATH 67% in Foundations of Math 12 or Pre-Calculus 11

SCIENCE Physics 11

ADMISSION TYPE Limited

ENGINEERING TRANSFER - Year 1

ENGLISH 73% in English Studies 12 or English First Peoples 12

MATH 73% in Pre-Calculus 12

SCIENCE 73% in Chemistry 11 (Chemistry 12 is highly recommend); 73% in Physics 12

ADDITIONAL REQUIREMENTS Students lacking Chemistry 12 may still be admitted, but will be unable to complete the first year courses in two semesters

ADMISSION TYPE Competitive

ENGINEERING TRANSFER - Year 2 *Electrical or Computer*

[C]

ADDITIONAL REQUIREMENTS Completion of first year of the Engineering Transfer Program at TRU (38 credits) or another recognized engineering transfer program, with a cumulative grade point average of 2.50; A minimum grade of C- or better in all courses that are part of the first-year transfer program

ADMISSION TYPE Competitive

Science & Technology continued....

BACHELOR OF NATURAL RESOURCE SCIENCE

[✕ C]

ENGLISH 73% in English Studies 12 or English First Peoples 12

MATH 67% in Pre-Calculus 12

SCIENCE 67% in Life Sciences 11; 67% in Chemistry 11

ADDITIONAL REQUIREMENTS Competitive GPA of at least 2.00 overall high school/post-secondary courses. Note: students with Anatomy & Physiology 12, and Chemistry 12 will be given preference.

ADMISSION TYPE Competitive

APPLIED SUSTAINABLE RANCHING DIPLOMA

(Williams Lake Campus)

ENGLISH English Studies 12 or English First Peoples 12

MATH 60% in Foundations of Math 11

ADDITIONAL REQUIREMENTS Completion of Grade 12 or Mature Student Status; Work placement on a working farm or ranch (Program Coordinator can assist you in finding a suitable placement)

ADMISSION TYPE Limited

ANIMAL HEALTH TECHNOLOGY DIPLOMA

Available on Campus or by Distance Education

ENGLISH 67% in English Studies 12 or English First Peoples 12

MATH 67% in Foundations of Math 11

SCIENCE 67% in Life Sciences 11; 67% in Chemistry 11

ADDITIONAL REQUIREMENTS One of Anatomy & Physiology 12, Chemistry 12 or Physics 12, C+ minimum grade (or equivalent); Anatomy & Physiology 12 is recommended; 80 hours orientation at a veterinary facility (working, volunteering or observing); Three references; Questionnaire; Canadian citizenship or permanent resident status

ADMISSION TYPE Competitive

ANIMAL WELFARE CERTIFICATE

Available by Distance Education

ADDITIONAL REQUIREMENTS Completion of grade 12 or Mature Student Status recommended

ADMISSION TYPE Limited

FORESTRY TRANSFER

ENGLISH 73% in English Studies 12 or English First Peoples 12

MATH 67% in Pre-Calculus 12

SCIENCE Two of Life Sciences 11, Chemistry 11 or Physics 11 - All three strongly recommended (note: Life Sciences 11 is minimum requirement for entry into BIOL 1110 at TRU); One of Anatomy & Physiology 12, Chemistry 12 or Physics 12

ADMISSION TYPE Competitive

BACHELOR OF SCIENCE

[✕ C]

ENGLISH 73% in English Studies 12 or English First Peoples 12

MATH 67% in Pre-Calculus 12 (completed within the past two years)

SCIENCE Life Sciences 11 or Anatomy & Physiology 12 with C+; Chemistry 11; Physics 11

ADMISSION TYPE Non-competitive; Upgrading available in program

Majors: Animal Biology, Biology, Cellular, Molecular & Microbial Biology, Chemistry, Chemical Biology, Ecology & Environmental Biology, Environmental Chemistry, General Science

ENGLISH 73% in English Studies 12 or English First Peoples 12

MATH 67% in Pre-Calculus 12 (completed within the past two years)

SCIENCE Chemistry 11; Physics 11

ADMISSION TYPE Non-competitive; Upgrading available in program

Majors: Computing Science, Computing Science & Mathematics, Mathematics, Mathematical Sciences, Physics

Minors: Environmental Economics & Sustainable Development, Management, Archaeology and Geology

Exit credential after two years: Associate of Science

Social Work & Human Service

BACHELOR OF SOCIAL WORK

[✕]

ADDITIONAL REQUIREMENTS Year 3 entry; A minimum of 54 credits (60 credits recommended); The credit requirement can be met by general university studies, or a combination of human service certificate/diploma or equivalent with a minimum GPA of 2.67 and general university course work; General university course work must include 3 credits of academic English composition (ENGL 1100 at TRU) or 6 credits of English literature, and SOCW 2060 and SOCW 2120 or equivalent; A minimum GPA of 2.33 on general university coursework is required

ADMISSION TYPE Competitive

EDUCATION ASSISTANT AND COMMUNITY SUPPORT CERTIFICATE

ENGLISH 73% in English Studies 12 or English First Peoples 12

ADDITIONAL REQUIREMENTS Two reference letters; 18 years of age on or before December 31 of the fall semester; Canadian citizenship or permanent resident status

ADMISSION TYPE Limited

HUMAN SERVICE DIPLOMA

ENGLISH 73% in English Studies 12 or English First Peoples 12

ADDITIONAL REQUIREMENTS Two references; 19 years of age prior to start of program; Canadian citizenship or permanent resident status

ADMISSION TYPE Limited

University & Employment Preparation

EDUCATION AND SKILLS TRAINING CERTIFICATE PROGRAM (ESTR)

ADDITIONAL REQUIREMENTS See tru.ca/calendar for admission requirements

ADMISSION TYPE Limited

ENGLISH AS A SECOND LANGUAGE Academic

ADDITIONAL REQUIREMENTS See tru.ca/calendar for admission requirements

ADMISSION TYPE Limited

UNIVERSITY PREPARATION

ADDITIONAL REQUIREMENTS See tru.ca/calendar for admission requirements

ADMISSION TYPE Non-competitive

Kamloops Seasonal Weather Range

Experience all four seasons with more than 2,000 hours of sunshine annually in Kamloops! These are approximate seasonal highs and lows, not average temperatures. We might hit the peaks or dips only briefly each season.




AUTUMN
5° to 18° C



WINTER
-22° to 5° C



SPRING
0° to 16° C



SUMMER
10° to 38° C

Trades & Industrial Technology

ACCUPLACER is a computer-adaptive test designed to evaluate skills in reading, writing and mathematics. It is the entry assessment for Trades applicants.

To schedule a test session, contact assess@tru.ca

Jump-start a career in the trades with a certificate, diploma or degree.

tru.ca/trades

Apprenticeships in Construction, Mechanical & Welding Trades	<p>MINIMUM ADMISSION REQUIREMENTS Valid Industry Training Authority (ITA) number (indentured/sponsored by an employer); Working in your trade</p> <p>ADMISSION TYPE Limited</p>	<p>Automotive Service Technician, Carpenter, Diesel Engine Mechanic, Electrician – Construction, Electrician – Industrial, Gasfitter A (Level 3), Gasfitter B (Level 1 & 2), Heavy Duty Equipment Technician, Truck and Transport Mechanic, Transport Trailer Technician, Industrial Mechanic (Millwright), Instrumentation and Control Technician, Refrigeration and Air Conditioning Mechanic, Steamfitter/Pipefitter, Plumber, Circular Saw Filer, Welder</p>
Bachelor of Technology (Trades & Technology Leadership)	<p>MINIMUM ADMISSION REQUIREMENTS Completion of a two-year diploma in technology, or a recognized trades qualification (provides two years of credit toward a degree)</p> <p>ADMISSION TYPE Limited</p>	
Foundation Certificates in Construction, Mechanical & Welding Trades	<p>MINIMUM ADMISSION REQUIREMENTS Successful Entry Assessment</p> <p>ADMISSION TYPE Limited</p>	<p>Automotive Service Technician, Electrician, Heavy Mechanical (Diesel Engine, Heavy Duty Equipment, Transport Trailer Technician, Truck and Transport Mechanic), Industrial Mechanic (Millwright/Machinist), Instrumentation and Control Technician, Refrigeration and Air Conditioning, Piping (Plumber, Steamfitter/Pipefitter, Sprinklerfitter), Residential Construction (Carpenter Level 1 & 2), Welder</p>
Horticulture Certificate	<p>MINIMUM ADMISSION REQUIREMENTS Attend a program orientation session; Recommended: be in good physical condition and have a strong interest in plants and hands-on work</p> <p>ADMISSION TYPE Limited</p>	
Horticulture Management Diploma	<p>MINIMUM ADMISSION REQUIREMENTS Completion of a recognized one-year horticulture certificate which includes six credits of approved English courses; Some diploma courses may require specific pre-requisites</p> <p>ADMISSION TYPE Limited</p>	
Instrumentation Engineering Technology Diploma	<p>MINIMUM ADMISSION REQUIREMENTS See tru.ca/calendar for admission requirements</p> <p>ADMISSION TYPE Limited</p>	
Power Engineering 4th Class Certificate	<p>MINIMUM ADMISSION REQUIREMENTS See tru.ca/calendar for admission requirements</p> <p>ADMISSION TYPE Limited</p>	
Water & Wastewater Technology Diploma	<p>MINIMUM ADMISSION REQUIREMENTS Grade 12</p> <p>ADMISSION TYPE Limited</p>	
Water & Wastewater Utilities Certificate	<p>MINIMUM ADMISSION REQUIREMENTS Grade 12</p> <p>ADMISSION TYPE Limited</p>	

Graduate and Post-graduate Programs

Take your education to the next level. Our collaborative research culture and integrated approach to graduate studies, innovation and knowledge translation provide the dynamic learning environment necessary for inquiry, discovery and leadership in your field.

tru.ca/gradstudies

[Master of Business Administration](#)

[Master of Education](#)

[Master in Environmental Economics & Management](#)

[Master of Nursing](#)

[Master of Science in Data Science](#)

[Master of Science in Environmental Economics & Management](#)

[Master of Science in Environmental Science](#)

ADMISSION REQUIREMENTS

See tru.ca/calendar for admission requirements for master's degrees

ADMISSION TYPE Competitive

\$180,000
in scholarships available exclusively
to graduate students

Post-Baccalaureate Programs

ADMISSION TYPE Varies by program. Visit tru.ca/programs for more information.

Post-Baccalaureate Diplomas: Accounting, Adventure Studies, Business Administration, Economics, Entrepreneurship, Finance, Managing Festivals & Events, Human Resource Management, Innovation and Entrepreneurship in Tourism, International Business, Marketing, Resort Experience Management, Supply Chain Management, Tourism Destination Development, Tourism Experience Management

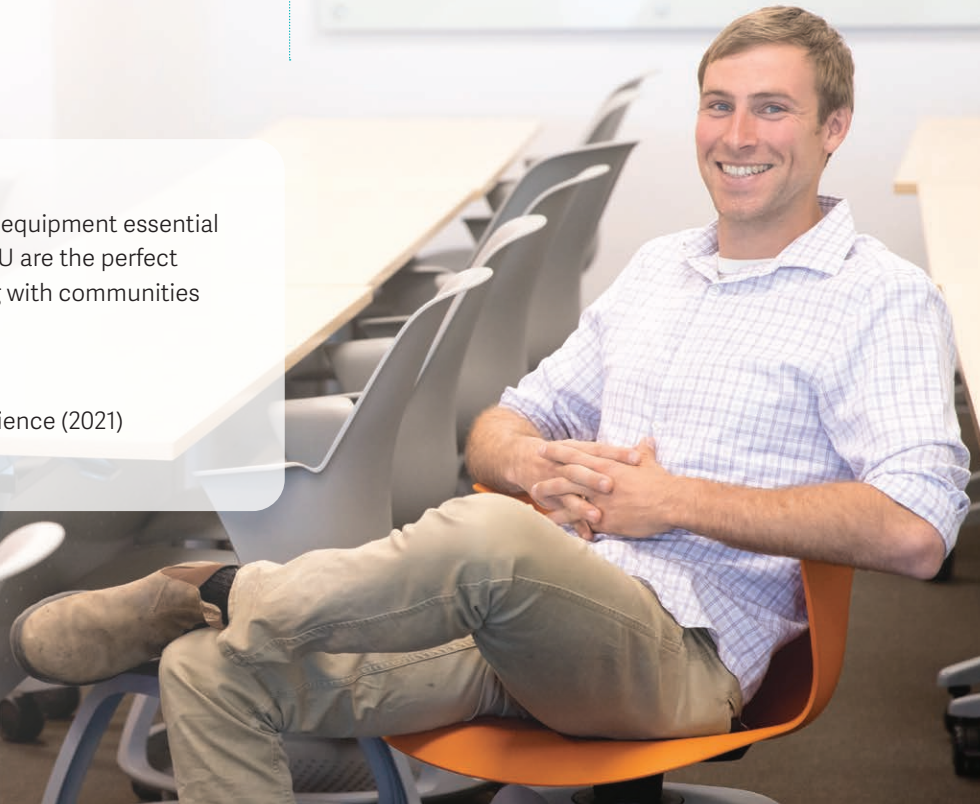
Post-Baccalaureate Certificates: Teaching English as a Second Language (TESL), Tourism

Post-Diploma Certificates: Infant and Toddler Educator, Special Needs Educator

Here, I'm able to access resources and equipment essential to my research. Graduate studies at TRU are the perfect balance of learning, teaching, engaging with communities and networking with professionals."

Kyle Gillich

Master of Science in Environmental Science (2021)
Penticton, BC





140
academic programs



Free WolfPack
Athletics tickets
for students

60+ TRUSU
campus
clubs



1 social media hashtag
#myTRU



**50 group
adventures**

like ziplining, fishing and escape rooms,
hosted each year by Leisure Explore
Activity Program (LEAP)

13 spots

to grab a coffee or
snack on campus



1st
in sustainability initiatives

In 2018 TRU achieved **platinum status** in the Association for the Advancement of Sustainability in Higher Education's global Sustainability Tracking, Assessment and Rating System (STARS)—making it the first Canadian university to do so



31 Average class size for
academic courses



Know Your Costs

I AM A	TUITION (FULL TIME)	STUDENT FEES	TOTAL (PER YEAR)
Degree, diploma or certificate student	\$4,399*	\$1,090	\$5,489
Trades (foundation) student	\$412/month	\$185/month	\$597/month
International student	\$17,820*	\$1,090	\$18,910
Books and Supplies	\$1,000 – \$2,000		
Residence	\$5,310 – 8,400		
Medical and Dental <i>(can opt out if you have comparable coverage)</i>	\$248		

*based on 15-credits per semester



AVERAGE FIRST YEAR BUDGET

DEGREE



\$5,489

TUITION & FEES
International Students: \$18,369



\$1,500

BOOKS & SUPPLIES



\$5,310+

RESIDENCE



\$4,835

FOOD, TRANSPORTATION & MISC

Estimated expenses are based on two semesters with five courses each in the Bachelor of Arts program

TRADES



\$4,080

TUITION & FEES



\$775

BOOKS & SUPPLIES



\$5,310+

RESIDENCE



\$4,835

FOOD, TRANSPORTATION & MISC

Estimated expenses are based on the Carpentry/Residential Construction Foundation Trade program (7.5 months)



HOW MUCH WILL FIRST YEAR COST YOU?

Plan your own budget for a year at TRU | tru.ca/cost

Student Awards & Financial Aid

Entrance Scholarships and Awards

More than
\$400,000
 in annual entrance
 scholarships and award offers
 for first-time students

General Entrance Scholarships

Recognizes leadership, community service and academic excellence

UP TO \$30,000
PER AWARD

Potential Entrance Awards

Recognizes exceptional potential

UP TO \$4,000
PER AWARD

Regional Entrance Awards

For students from secondary schools within the TRU region, outside the City of Kamloops

\$3,000
PER AWARD

Transfer Scholarships

For the new-to-TRU, but not new to university and college students

OVER \$10,000
AVAILABLE

tru.ca/entrance

Applications available online
December 2020

Entrance Scholarship deadline:
March 1, 2021

Entrance Awards deadline:
April 1, 2021

Ongoing Scholarships, Bursaries and Awards

OVER \$1,500,000 AVAILABLE TO TRU STUDENTS WHO HAVE COMPLETED AT LEAST ONE FULL-TIME SEMESTER.

DEFINITIONS

TYPE	Non-Repayable	Repayable	Application Required	Academic Achievement	Financial need	Additional Requirements
AWARD	✓		✓	recognizing ability/ accomplishment 2.00 GPA or equivalent		minimum 60% course load
BURSARY	✓		✓	2.00 GPA or equivalent	✓	minimum 60% course load (usually) already approved for government student loans (usually)
SCHOLARSHIP	✓			3.50 GPA minimum		minimum 80% course load and it is to be used for further study (usually)
GRANT	✓		✓ <small>NORMALLY</small>	2.00 GPA or equivalent	✓	
LOAN		✓	✓		✓	meet criteria such as residence, program of study, course load, adequate performance in studies
PRIZE	✓			recognizing academic achievement in program of study		may be a certificate or plaque, a cash prize, or a combination

QUESTIONS?

Contact Student Awards & Financial Aid
250-828-5024 | entrance@tru.ca

WANT MORE OPTIONS?

tru.ca/awards/external-funding to find external award resources.

Campus Housing

LIVE MINUTES FROM CLASS



Join a vibrant, active community of students from all over the world. Apply directly out of high school before **March 1, 2021** and secure a guaranteed space in North Tower or McGill Residence. After that date, applications will be accepted on a first-come, first-served basis.

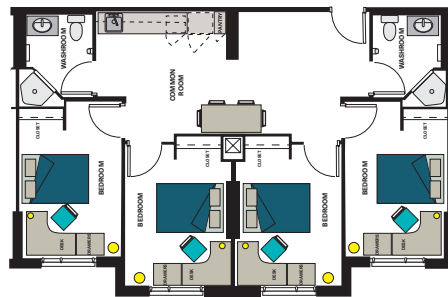
Photos left to right clockwise: North Tower, McGill Residence, East Village, East Village interior, McGill interior, North Tower bedroom.

tru.ca/housing

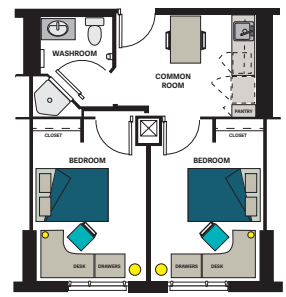
North Tower

Enjoy one of the best views in the city at the 11-storey North Tower. Access premium amenities such as a cardio room, dance studio, patio with large BBQ, games room and regular social activities.

North Tower 4 Bedroom Plan



North Tower 2 Bedroom Plan



NORTH TOWER SEPTEMBER – APRIL

Application fee	2 or 4 bedroom suite
\$100	\$7,950*



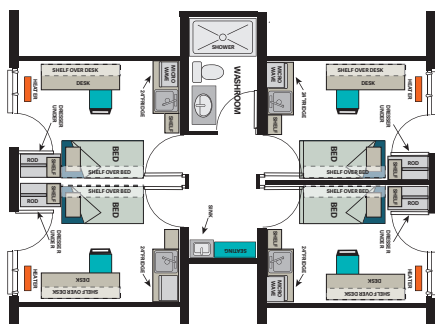
McGill Residence

This community is ideal for students looking for an active, close-knit, communal experience. The newly renovated McGill Residence has amenities that include laundry, games room, kitchen and study room.

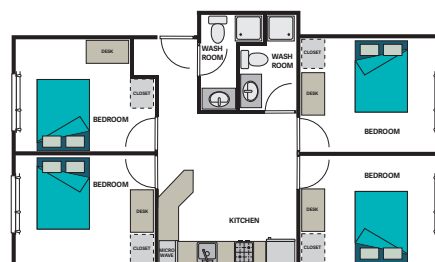
East Village

Have the independence of off-campus living with the convenience of on-campus life at East Village. This location is ideal for students looking for a more independent, mature community with student-friendly amenities.

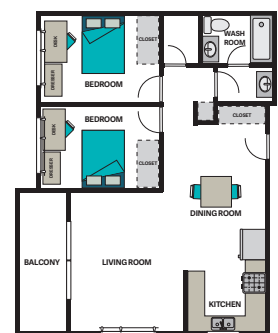
McGill Residence 4 Bedroom Plan



East Village 4 Bedroom Plan



East Village 2 Bedroom Plan



MCGILL RESIDENCE SEPTEMBER – APRIL

Application fee	Room
\$100	\$5,310*

EAST VILLAGE SEPTEMBER – AUGUST

Application fee	2 bedroom suite	4 bedroom suite
\$100	\$8,400*	\$7,100*

*Rates are for the 2020-21 year and are subject to change without notice. Floor plans may slightly differ from room to room.



Application Deadlines

TRU begins accepting applications for most programs on **October 1**. Applications for trades programs are accepted throughout the year. Limited admission programs do not have a posted deadline but we encourage you to complete your application early, before seats fill up.

Application deadlines that fall on a weekend or a statutory holiday will be extended to the next business day.

Bachelor of Arts, Bachelor of Business Administration, Bachelor of Computing Science, Bachelor of Fine Arts, Bachelor of Science:

Applications received prior to **March 1** will be guaranteed an admission decision and an earlier course registration date. These programs continue to accept applications until the start of each semester.

PROGRAM	DEADLINE
Nursing	January 31
Social Work	January 31
Respiratory Therapy	February 1
Law	February 10
Animal Health Technology (campus)	February 1
Animal Health Technology (distance)	September 30
Education (Elementary)	February 15
Education (Secondary) - STEM	
Engineering Transfer (year 1 & 2)	March 1
Software Engineering	



Programs may continue to accept applications as space permits. Contact **admissions@tru.ca** for specific program extensions. Completed applications for competitive admission programs which are received before the application deadline may be considered for early review.

QUESTIONS?

Contact the Future Students Team

Toll Free: 1-888-663-1653
futurestudents@tru.ca



FALL 2021 FUTURE STUDENT TIMELINE

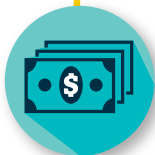
Your Steps to Becoming a TRU Student



- ❑ **Explore your TRU program options**
 - Connect with a Student Recruiter-Advisor on the Future Students Team



- ❑ **October 1 – Applications open for Fall 2021**
 - tru.ca/apply (program deadlines vary)
 - Application Fee \$30.42
 - Submit:
 - Interim & final high school transcripts
 - Post-secondary transcripts (if applicable)
 - Supporting documents (if applicable)



- ❑ **Offer of admission**
 - Accept your seat offer
- ❑ **Pay your tuition deposit**
 - \$300 for non-competitive programs
 - \$500 for limited and competitive admissions programs



- ❑ **March 1 – Entrance Scholarship applications due**
 - Student Awards & Financial Aid is here to help you: awards@tru.ca or call 250-828-5024
 - Applications open December 1
- ❑ **March 1 – Deadline for guaranteed first year housing***
 - tru.ca/housing
- ❑ **May – Timetable your courses**
 - Create your conflict-free fall and winter course plan
 - Reach out to Academic Advising for selection assistance advising@tru.ca or call 250-828-5075



- ❑ **Mid-June – Register in your fall and winter semester courses**
- ❑ **September 3 – Fall semester tuition due**
- ❑ **September 7 – TRU Orientation 2021**

**Apply directly out of high school and secure a guaranteed space in North Tower or McGill Residence.*

Questions? Contact us!



Future Students Team
Old Main 1468
Thompson Rivers University
805 TRU Way, Kamloops, BC
V2C 0C8 Canada
Toll Free: 1-888-663-1653
Email: futurestudents@tru.ca

tru.ca/future

[thompsonriversu](https://www.facebook.com/thompsonriversu)

[@thompsonriversu](https://twitter.com/thompsonriversu)

[thompsonriversu](https://www.instagram.com/thompsonriversu)

This publication was printed in August 2020 before the 2021/2022 academic year. If there are discrepancies between this publication and the Thompson Rivers University calendar, the calendar will take precedence • FUT21002